

Banner *Occupancy Solution Kits (OSK)*



How the Occupancy Solution Kit Works



The Occupancy Solution Kit works by monitoring the number of people into and out of an area. User defined Alert levels trigger a **Red** light on the Indicator Tower Light to show that the area occupancy has been exceeded or shows **Green** when it's OK to enter. Simple to install and easy to understand. Plus, it offers optional reporting to identify trends in customer traffic.



Indicator Tower Light

Note: The Operator Interface offers the users the following features:

- The indicator is off when the occupancy level is below the warning limit to save battery. The indicator turns **Yellow** when the warning limit has been reached. The indicator turns **Red** when the occupancy limit has been reached.
- Use the up and down buttons to manually override the count.



Operator Interface

Occupancy Solution Kit Considerations



- Total Count – Max 4 doors per system. Tracks the total count within a building (Example – Retail business)
- Multiple Count – Max 10 doors per system. Tracks the count for each door separately (Example – Restrooms, cafeteria, hallways, conference rooms, etc.)
- All sensors and nodes are pre-bound and labeled since they must be applied to specific registers
- The special scripts/XML is preloaded on the DXM, also available upon request for customers want to build their own system
- The Q45 Directional Photo Eye Pair is specifically designed for this application and logic resides in the sensors
- Q45 brackets are designed to allow for the correct spacing and easier mounting
- Kit pricing set lower than if parts are ordered separately
- Data provided by the solution is valuable
- The Setup Guides on how to install a system (Total Count/TC or Multiple Count/MC) is loaded on the [Safe Work Solutions site](#):
 - TC Setup Guide: 217889
 - MC Setup Guide: 217890

One Door Model: Total Count (900 MHz)

OSK9-1TC / Part: 810030

Contents of Kit include:	Part #	Qty
1. *DXM1200-B1R1	801553	1
2. PSW-24-1	803521	1
3. DX80N9Q45LPDIR	810011	1
4. SMBQ45PC (bracket)	810046	1
5. SMBRPC (reflect bracket)	810047	1
6. TL70DXN9GRQ-INOUTIKIT	810149	1
Kit Includes:		
• SG-TL70-G-ENTERI	809967	
• SG-TL70-R-STOPI	809965	
• B-TL70DXN9-Q5	94229	
• LMB30LP	808590	
• PSW-24-1	803521	
• MQDEC-415SS-PUR	81299	
7. DX80N9DSTS	808588	1
8. Authorization Code Insert	217895	1 (Optional 90-day Cloud)
9. TC Set Up Guide	217889	1

TC = Total Count Model. Mostly used for (1) door In/Out for a “Total Count” occupancy system.

*Includes Special Script/XML for TC

NOTE: All Nodes are Pre-Bound at pre-selected Node addresses and Labeled



One Door Model: Total Count (2.4 GHz)

OSK2-1TC-NB / Part: 810031

Contents of Kit include:	Part #	Qty
1. *DXM1200-B1R3	805550	1
2. PSW-24-1	803521	1
3. DX80N2Q45LPDIR	810014	1
4. SMBQ45PC (bracket)	810046	1
5. SMBRPC (reflect bracket)	810047	1
6. TL70DXN2GRQ-INOUTIKIT	810150	1
Kit Includes:		
• SG-TL70-G-ENTERI	809967	
• SG-TL70-R-STOPI	809965	
• B-TL70DXN9-Q5	94229	
• LMB30LP	808590	
• PSW-24-1	803521	
• MQDEC-415SS-PUR	81299	
7. DX80N2DSTS	808637	1
8. Authorization Code Insert	217895	1 (Optional 90-day Cloud)
9. TC Set Up Guide	217889	1

TC = Total Count Model. Mostly used for (1) door In/Out for a “Total Count” occupancy system.

*Includes Special Script/XML for TC

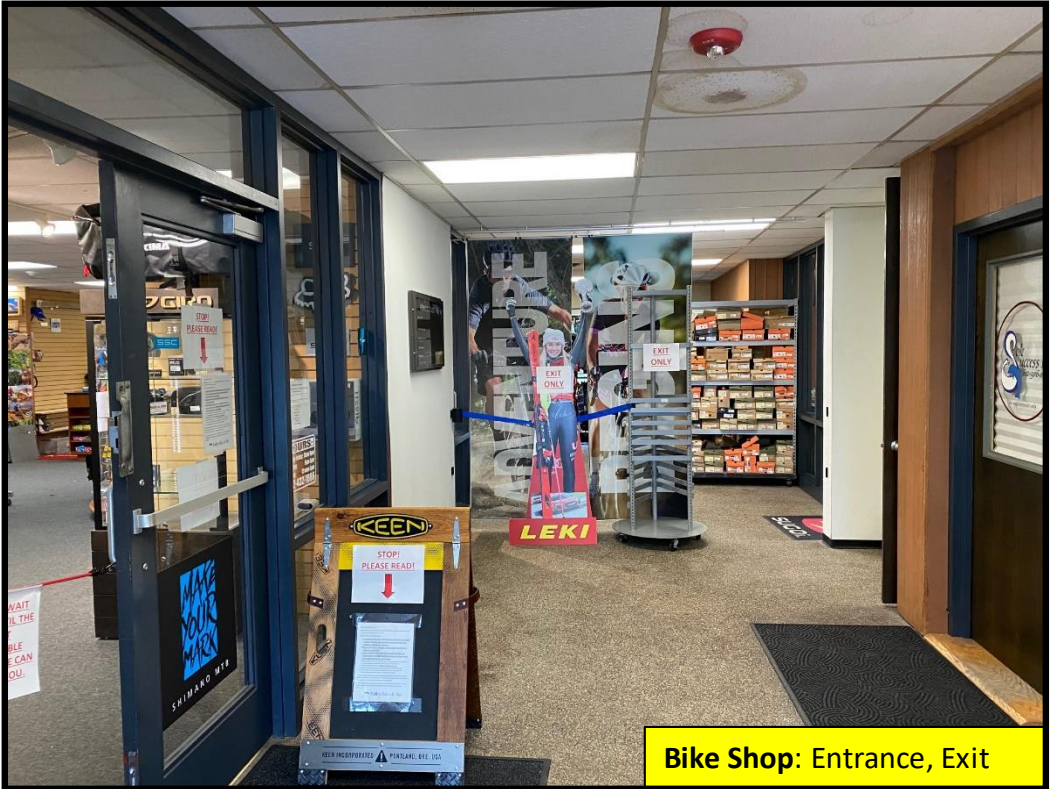
NOTE: All Nodes are Pre-Bound at pre-selected Node addresses and Labeled



Two Door Model: Total Count (900 MHz)

OSK9-2TC / Part: 810032

Contents of Kit include:	Part #	Qty
1. *DXM1200-B1R1	801553	1
2. PSW-24-1	803521	1
3. DX80N9Q45LPDIR	810011	2
4. SMBQ45PC (bracket)	810046	2
5. SMBRPC (reflect bracket)	810047	2
6. TL70DXN9GRQ-INOUTIKIT	810149	2
Kit Includes:		
• SG-TL70-G-ENTERI	809967	
• SG-TL70-R-STOPI	809965	
• B-TL70DXN9-Q5	94229	
• LMB30LP	808590	
• PSW-24-1	803521	
• MQDEC-415SS-PUR	81299	
7. DX80N9DSTS	808588	1
8. Authorization Code Insert	217895	1 (Optional 90-day Cloud)
9. Set Up Guide	217889	TC Guide



TC = Total Count Model. For (1) door In/Out for a “Total Count” occupancy system.

*Includes Special Script/XML for TC

NOTE: All Nodes are Pre-Bound at pre-selected Node addresses and Labeled

Contents of Kit include:

Kit Includes:

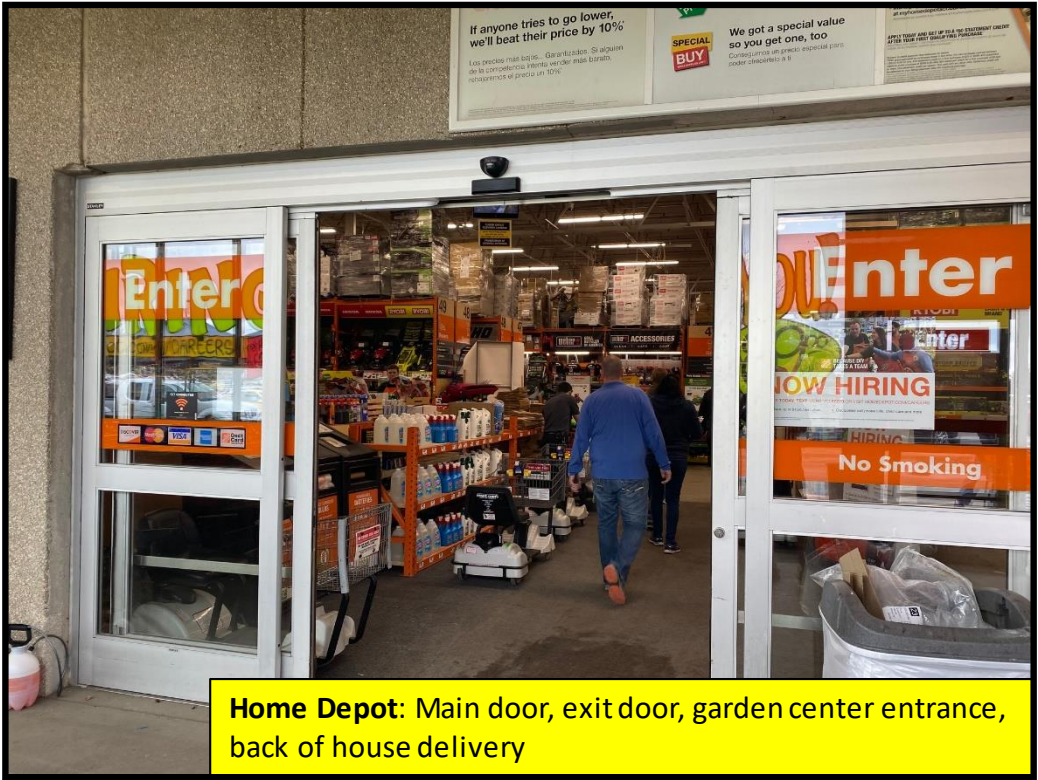


NOTE: All Nodes are Pre-Bound at pre-selected Node addresses and Labeled

Four Door Model: Total Count (900 MHz)

OSK9-4TC / Part: 810034

Contents of Kit include:	Part #	Qty
1. *DXM1200-B1R1	801553	1
2. PSW-24-1	803521	1
3. DX80N9Q45LPDIR	810011	4
4. SMBQ45PC (bracket)	810046	4
5. SMBRPC (reflect bracket)	810047	4
6. TL70DXN9GRQ-INOUTIKIT	810149	4
Kit Includes:		
• SG-TL70-G-ENTERI	809967	
• SG-TL70-R-STOPI	809965	
• B-TL70DXN9-Q5	94229	
• LMB30LP	808590	
• PSW-24-1	803521	
• MQDEC-415SS-PUR	81299	
7. DX80N9DSTS	808588	1
8. Authorization Code Insert	217895	1 (Optional 90-day Cloud)
9. Set Up Guide	217889	TC Guide



TC = Total Count Model. For (1) door In/Out for a “Total Count” occupancy system.

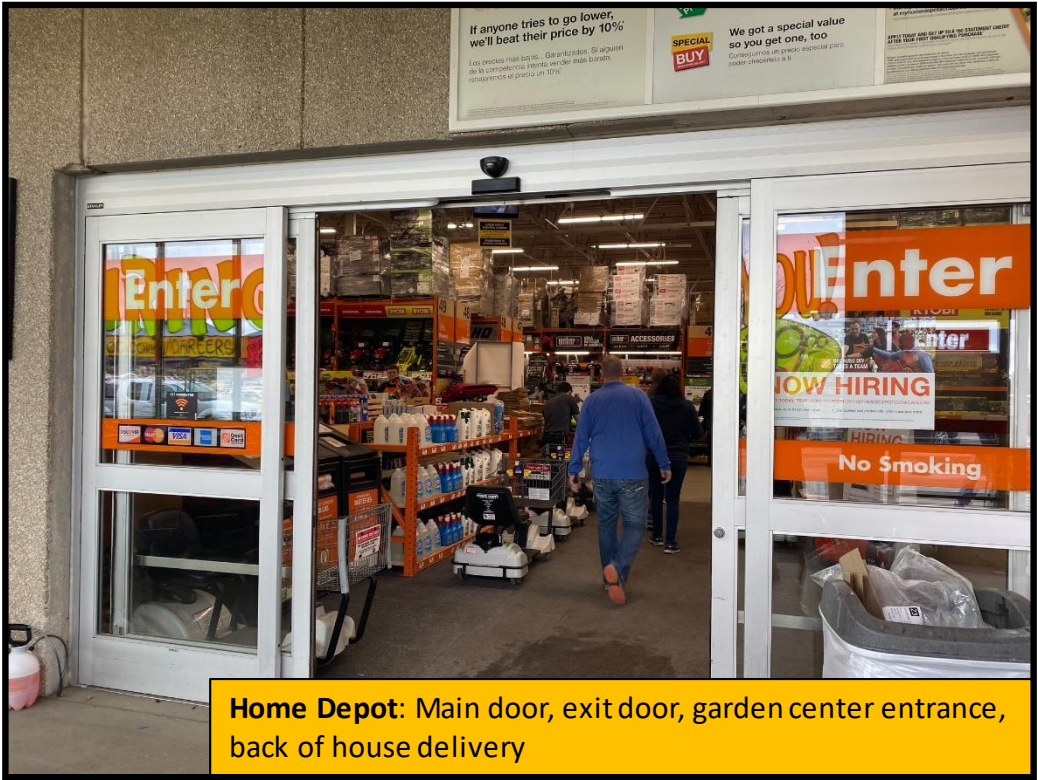
*Includes Special Script/XML for TC

NOTE: All Nodes are Pre-Bound at pre-selected Node addresses and Labeled

Four Door Model: Total Count (2.4 GHz)

OSK2-4TC-NB / Part: 810035

Contents of Kit include:	Part #	Qty
1. *DXM1200-B1R3	805550	1
2. PSW-24-1	803521	1
3. DX80N2Q45LPDIR	810014	4
4. SMBQ45PC (bracket)	810046	4
5. SMBRPC (reflect bracket)	810047	4
6. TL70DXN2GRQ-INOUTIKIT	810150	4
Kit Includes:		
• SG-TL70-G-ENTERI	809967	
• SG-TL70-R-STOPI	809965	
• B-TL70DXN9-Q5	94229	
• LMB30LP	808590	
• PSW-24-1	803521	
• MQDEC-415SS-PUR	81299	
7. DX80N2DSTS	808637	1
8. Authorization Code Insert	217895	1 (Optional 90-day Cloud)
9. Set Up Guide	217889	TC Guide



TC = Total Count Model. For (1) door In/Out for a “Total Count” occupancy system.

*Includes Special Script/XML for TC

NOTE: All Nodes are Pre-Bound at pre-selected Node addresses and Labeled

Two Door Model: Multiple Count (900 MHz)

OSK9-2MC / Part: 810036

Contents of Kit include:	Part #	Qty
1. *DXM1200-B1R1	801553	1
2. PSW-24-1	803521	1
3. DX80N9Q45LPDIR	810011	2
4. SMBQ45PC (bracket)	810046	2
5. SMBRPC (reflect bracket)	810047	2
6. TL70DXN9GRQ-INOUTIKIT	810149	2
Kit Includes:		
• SG-TL70-G-ENTERI	809967	
• SG-TL70-R-STOPI	809965	
• B-TL70DXN9-Q5	94229	
• LMB30LP	808590	
• PSW-24-1	803521	
• MQDEC-415SS-PUR	81299	
7. DX80N9DSTS	808588	1
8. Authorization Code Insert	217895	1 (Optional 90-day Cloud)
9. Set Up Guide	217890	MC Guide

MC = Multiple Count Model. For more than one door monitoring including In/Out, Bathroom, Locker Room etc.

*Includes Special Script/XML for MC

NOTE: All Nodes are Pre-Bound at pre-selected Node addresses and Labeled



Golf Club: Entrance, Exit, Men/Women
Bathrooms, Locker rooms

Two Door Model: Multiple Count (2.4 GHz)

OSK2-2MC-NB / Part: 810037

Contents of Kit include:	Part #	Qty
1. *DXM1200-B1R3	805550	1
2. PSW-24-1	803521	1
3. DX80N2Q45LPDIR	810014	2
4. SMBQ45PC (bracket)	810046	2
5. SMBRPC (reflect bracket)	810047	2
6. TL70DXN2GRQ-INOUTIKIT	810150	2
Kit Includes:		
• SG-TL70-G-ENTERI	809967	
• SG-TL70-R-STOPI	809965	
• B-TL70DXN9-Q5	94229	
• LMB30LP	808590	
• PSW-24-1	803521	
• MQDEC-415SS-PUR	81299	
7. DX80N2DSTS	808637	1
8. Authorization Code Insert	217895	1 (Optional 90-day Cloud)
9. Set Up Guide	217890	MC Guide

MC = Multiple Count Model. For more than one door monitoring including In/Out, Bathroom, Locker Room etc.

*Includes Special Script/XML for MC

NOTE: All Nodes are Pre-Bound at pre-selected Node addresses and Labeled



Four Door Model: Multiple Count (900 MHz)

OSK9-4MC / Part: 810038

Contents of Kit include:	Part #	Qty
1. *DXM1200-B1R1	801553	1
2. PSW-24-1	803521	1
3. DX80N9Q45LPDIR	810011	4
4. SMBQ45PC (bracket)	810046	4
5. SMBRPC (reflect bracket)	810047	4
6. TL70DXN9GRQ-INOUTIKIT	810149	4
Kit Includes:		
• SG-TL70-G-ENTERI	809967	
• SG-TL70-R-STOPI	809965	
• B-TL70DXN9-Q5	94229	
• LMB30LP	808590	
• PSW-24-1	803521	
• MQDEC-415SS-PUR	81299	
7. DX80N9DSTS	808588	1
8. Authorization Code Insert	217895	1 (Optional 90-day Cloud)
9. Set Up Guide (TC or MC)	217890	MC Guide



MC = Multiple Count Model. For more than one door monitoring including In/Out, Bathroom, Locker Room etc.

*Includes Special Script/XML for MC

NOTE: All Nodes are Pre-Bound at pre-selected Node addresses and Labeled

Four Door Model: Multiple Count (2.4 GHz)

OSK2-4MC-NB / Part: 810039

Contents of Kit include:	Part #	Qty
1. *DXM1200-B1R3	805550	1
2. PSW-24-1	803521	1
3. DX80N2Q45LPDIR	810014	4
4. SMBQ45PC (bracket)	810046	4
5. SMBRPC (reflect bracket)	810047	4
6. TL70DXN2GRQ-INOUTIKIT	810150	4
Kit Includes:		
• SG-TL70-G-ENTERI	809967	
• SG-TL70-R-STOPI	809965	
• B-TL70DXN9-Q5	94229	
• LMB30LP	808590	
• PSW-24-1	803521	
• MQDEC-415SS-PUR	81299	
7. DX80N2DSTS	808637	1
8. Authorization Code Insert	217895	1 (Optional 90-day Cloud)
9. Set Up Guide (TC or MC)	217890	MC Guide

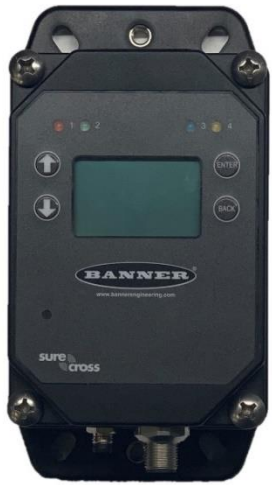


MC = Multiple Count Model. For more than one door monitoring including In/Out, Bathroom, Locker Room etc.

*Includes Special Script/XML for MC

NOTE: All Nodes are Pre-Bound at pre-selected Node addresses and Labeled

Occupancy Solution Kits – Hardware 900 MHz



Controller

*DXM1200-B1R1
Item: 801553
*Special script/XML



Power Supply

PSW-24-1
Item: 803521



Q45 Photo-Eye Pair

DX80N9Q45LPDIR
Item: 810011



Remote Indicator

TL70DXN9GRQ-
INOUTIKIT
Item: 810149
(Bracket, Power, Cord set)



Operator Interface

DX80N9DSTS
Item: 808588

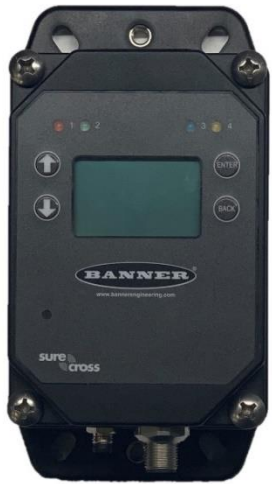


Cloud Option

90-Day Trial
Item: 217895



Occupancy Solution Kits – Hardware 2.4 GHz



Controller

*DXM1200-B1R3

Item: 805550

*Special script/XML



Power Supply

PSW-24-1

Item: 803521



Q45 Photo-Eye Pair

DX80N2Q45LPDIR

Item: 810014



Remote Indicator

TL70DXN2GRQ-
INOUTIKIT

Item: 810150

(Bracket, Power, Cord set)



Operator Interface

DX80N2DSTS

Item: 808637



Cloud Option

90-Day Trial

Item: 217895



Occupancy Solution Kits (OSK) 900 MHz & 2.4 GHz



900 MHz

MODEL#	PART#	
OSK9-1TC	810030	
OSK9-2TC	810032	
OSK9-4TC	810034	
OSK9-2MC	810036	
OSK9-4MC	810038	

2.4 GHz

MODEL#	PART#	
OSK2-1TC-NB	810031	
OSK2-2TC-NB	810033	
OSK2-4TC-NB	810035	
OSK2-2MC-NB	810037	
OSK2-4MC-NB	810039	

OSK Kits

TC = Total Door Count (based on special DXM1200 script and XML).

MC = Multiple Door Count (based on special DXM1200 script and XML)

NOTE: Nodes are Pre-Bound at Pre-Selected Node Addresses and are Labeled

